

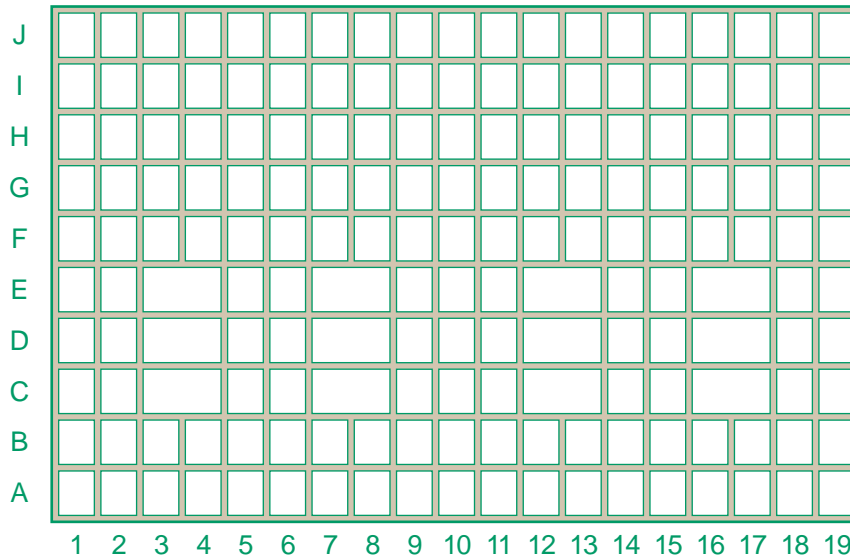
# LAKEWOOD CEMETERY

*Celebrating Life Since 1871*

3600 Hennepin Avenue • Minneapolis, MN 55408

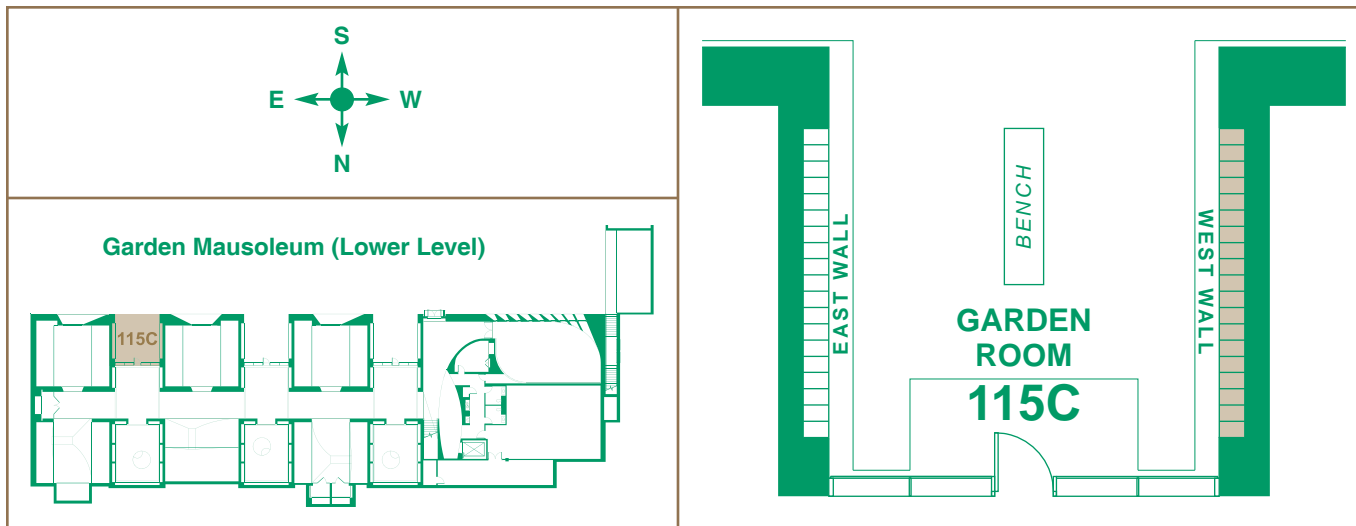
Phone (612) 822-2171 • Fax (612) 822-0575

[www.lakewoodcemetery.com](http://www.lakewoodcemetery.com)



**West Wall Detail**  
(Garden Room 115C)

<b>Garden Mausoleum</b>
<b>Lower Level</b>
Name
Room
<b>Garden Room 115C</b>
Tier
Niche



**DIRECTIONS:**


From the main gate, follow the orange highlighted road, on full cemetery map, to the Garden Mausoleum entrance denoted by a red star (★).

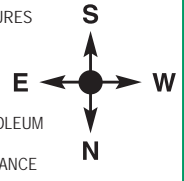
**DRIVE CAREFULLY**

Please do not drive or park on the grass.



**LAKWOOD CEMETERY**  
*Celebrating Life Since 1871*

- SIGNIFICANT FEATURES AND MEMORIALS
-  DRIVING PATH FROM MAIN GATE TO GARDEN MAUSOLEUM
-  MAUSOLEUM ENTRANCE



# LAKEWOOD CEMETERY

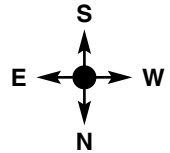
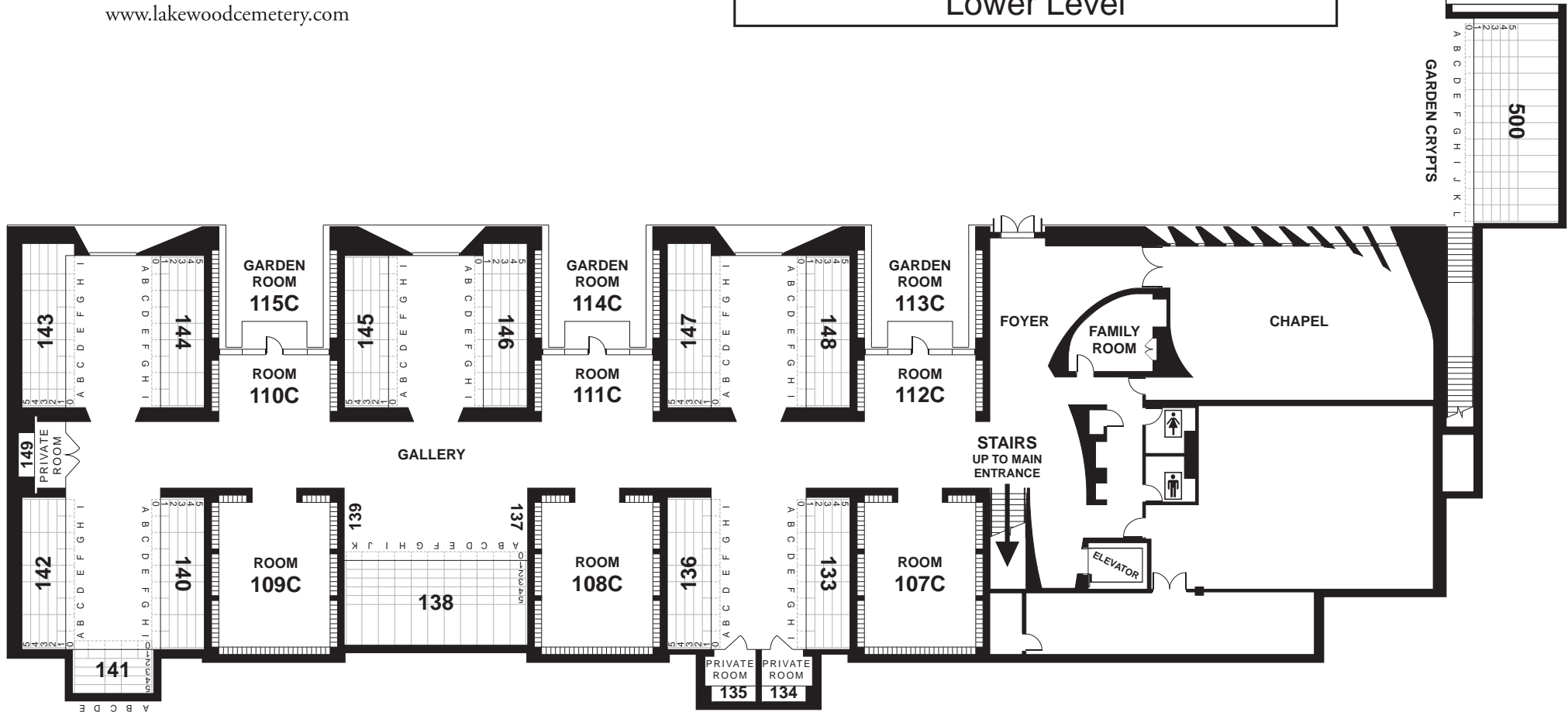
*Celebrating Life Since 1871*

3600 Hennepin Avenue • Minneapolis, MN 55408

Phone (612) 822-2171 • Fax (612) 822-0575

[www.lakewoodcemetery.com](http://www.lakewoodcemetery.com)

## GARDEN MAUSOLEUM Lower Level



Lakewood has long been considered one of the outstanding memorial parks in America. It was conceived and founded in 1871 as a community trust, forever free of commercialism for private gain. It is a mutual non-profit, non-sectarian perpetual care cemetery. It consists of 250 acres of gentle hills located in a beautiful setting between Lake Calhoun and Lake Harriet. The tasteful landscaping and architecture is a statement of loving care and beauty.

The Memorial Chapel is truly an architectural masterpiece. With its tiled domes and Byzantine-inspired design, the Chapel contains one of the largest true mosaics in the western world.

Lakewood has complete facilities, two public mausoleums, chapel, crematory, columbarium, lawn crypts, garden crypts, traditional burial lots as well as family type monument lots. Pre-need memorial property may be purchased on a budget purchase plan that can be tailored to your requirements. There is no interest or carrying charge.

Lakewood Cemetery is a non-profit cemetery association governed by a board of trustees.

For more information, inquire at the cemetery office.

**GRAVE DECORATION REGULATIONS**

Only fresh floral bouquets in approved vases are permitted from April 1st to October 31st. Glass jars and other breakable containers do not constitute a proper container. This type is easily broken and can be injurious to both employees and visitors. For more information about permanent floral bouquet holders, please contact cemetery office.

Potted plants are permitted on Memorial Day only and must be removed by the 4th day thereafter in order to make mowing the lawns possible.

From November 1st to March 1st wreaths are permitted. These will be removed during our spring clean-up. Artificial plants, flowers or decorations are **not** permitted at any time.

**LAKWOOD CEMETERY**

*Celebrating Life Since 1871*

3600 Hennepin Avenue • Minneapolis, MN 55408  
 Phone (612) 822-2171 • Fax (612) 822-0575  
 www.lakewoodcemetery.com

**MAUSOLEUM DECORATION REGULATIONS**

Fresh cut flowers placed in a suitable vase or container are permitted at any time.

Flowering type potted plants are allowed on special holidays such as Christmas, Easter, Memorial Day, or on birthdays or anniversaries. They will be permitted to remain on display for five (5) days.

All decorations must be displayed on the stands provided for that purpose. None will be allowed to be placed on the Marble floors, carpet, or attached to the crypt or niche doors.

Non-blooming houseplants, artificial plants, or flowers, including dried flowers or wreaths, are **not** permitted at any time.

Non-floral, stand-alone decorations (ie. balloons, pin-wheels, Christmas trees, holiday placards, photographs, statues, trinkets, etc.) are **not** permitted at any time.

If, in the judgement of the Association, a floral decoration or its container is inappropriate, has become deteriorated, unsightly, or left beyond the limited time, it will be removed and disposed of.

*Complete Grave and Mausoleum Decoration Regulations are available at the administration office.*

**DRIVE CAREFULLY**

Please do not drive or park on the grass.

**CEMETERY HOURS**

The cemetery gates are open every day at 8:00 A.M.

The gate closing schedule is as follows:

WINTER HOURS: From the end of Daylight Saving Time in the fall until the start of Daylight Saving Time in the spring.  
 ..... 5:00 P.M.

SUMMER HOURS: From the start of Daylight Saving Time until Labor Day.  
 ..... 8:00 P.M.  
 From Labor Day until the end of Daylight Saving Time.  
 ..... 7:00 P.M.

**OFFICE HOURS**

Monday thru Friday . . . . . 8 A.M. to 4:30 P.M.  
 Saturday . . . . . 8 A.M. to 12 P.M.  
 Telephone (612) 822-2171

**MAUSOLEUMS**

Open daily including Saturday, Sunday and Holidays.  
 Personnel on duty . . . . . 10 A.M. to 4:30 P.M.  
 Telephone (612) 822-2171